

Whitepaper - Get started with Intelli-Ware and LiveCapture

Revision: June 2012



Foreword

Starting from v1.3, Intelli-Ware offers integration with WaveCapture's LiveCapture software application, enabling transfer of measurement data from LiveCapture to Intelli-Ware. Either LiveCapture's transfer function or spectrum analyser response can then be seen as an underlay in all parametric EQ bode-plot and crossover windows. Key features of LiveCapture can also be controlled directly from within Intelli-Ware, removing the need for switching from one application window to another when tuning a system.

LiveCapture may run on the same PC as Intelli-Ware, or on another PC on the same network.

Hint: the easiest way to get started is to simply loopback your soundcard or USB adapter's left output to its left input, and similarly its right output to its right input. All measurements should then be flat.

In Spectrum mode, the spectrograph and/or RTA readout should show activity on the screen.

In Transfer mode, a horizontal trace should be seen in the Magnitude and Phase readout.

Requirements

A Windows (XP or 7, 32 or 64 bits) computer with Intelli-Ware installed.

The same, or another networked PC, with Windows installed to run LiveCapture. When running Intelli-Ware and LiveCapture on different machines, make sure those machines are connected to the same network (same IP address range etc.)

A working copy of LiveCapture Light or Pro, from Nov 2011 onwards. The latest version can be downloaded from WaveCapture's FTP site:

<ftp://wavecapture.ath.cx/LiveCapturePreview/>

Intelli-Ware v1.4.0.0 onwards, downloadable from the Apex website www.apex-audio.eu or directly from:

<http://www.apex-audio.be/manufacturing/support/downloads/download/45>

Setting-up Intelli-Ware

While LiveCapture is running, launch Intelli-Ware. Go to the "Tools" menu and choose "Analyser bridge settings". A new window will open giving you the option to select the "Type" of the analyser you wish to use. Choose "LiveCapture".

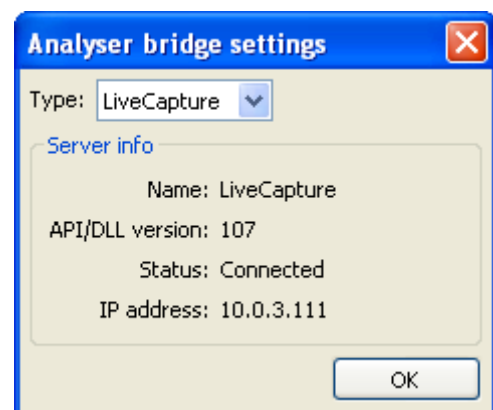
Intelli-Ware and LiveCapture should find each other automatically. Wait a moment as the "Server's status" should change to "Connected" and show the IP address of the computer running LiveCapture. You may now close the analyser bridge dialogue window.

Setting-up LiveCapture

If you are new to LiveCapture, configure it to recognize and use your soundcard or USB audio interface. This is explained in LiveCapture's documentation that can be found in the Help menu.

Start LiveCapture's generator and set it to generate pink noise at a level which doesn't clip your soundcard or USB audio interface's inputs.

Select either Spectrum or Transfer mode and make sure a sensible trace is visible on the LiveCapture screen.



If you don't have an Intelli-X² connected to Intelli-Ware then it is possible to open a virtual device. Right-click in the "Selector" pane and add one of the virtual devices present in the context menu.



In the "Overview" pane switch to any of the device's PEQ (either input or output) or crossover (only at the outputs).

In the "Dashboard" pane, click on the RTA option button. A new side-window will open allowing remote control of the analyser.

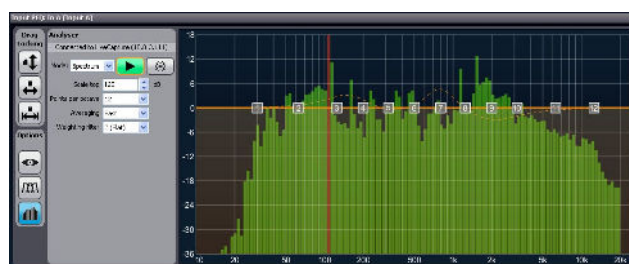


Select either Spectrum or Transfer and click on the Play button.

In Spectrum mode, the Play button and the Points per octave, Averaging and weighting filter drop down menus are remote controls of LiveCapture. The same measurement can be seen in LiveCapture as in Intelli-Ware's PEQ and crossover windows. Freeze and Scale Top are local controls and can be set without affecting LiveCapture.

In Transfer mode, the Play and (Delay)-Find buttons, the Delay spin-box, the (Delay)-Track check-box and the Averaging drop-down menu are remote controls of LiveCapture. The Freeze button, Scale Ref spin-box and Invert check-box are local controls and can be set without affecting LiveCapture.

For more information regarding all these features, please refer to the LiveCapture's documentation.



LiveCapture bridge in spectrum mode



LiveCapture bridge in transfer mode with group delay enabled